

Small Doubler Assembly



Provides additional
circuit operation
from existing valve

PORT #8 SAE
Valve - P
Cyl - 1 V1
Cyl. 2 - V2

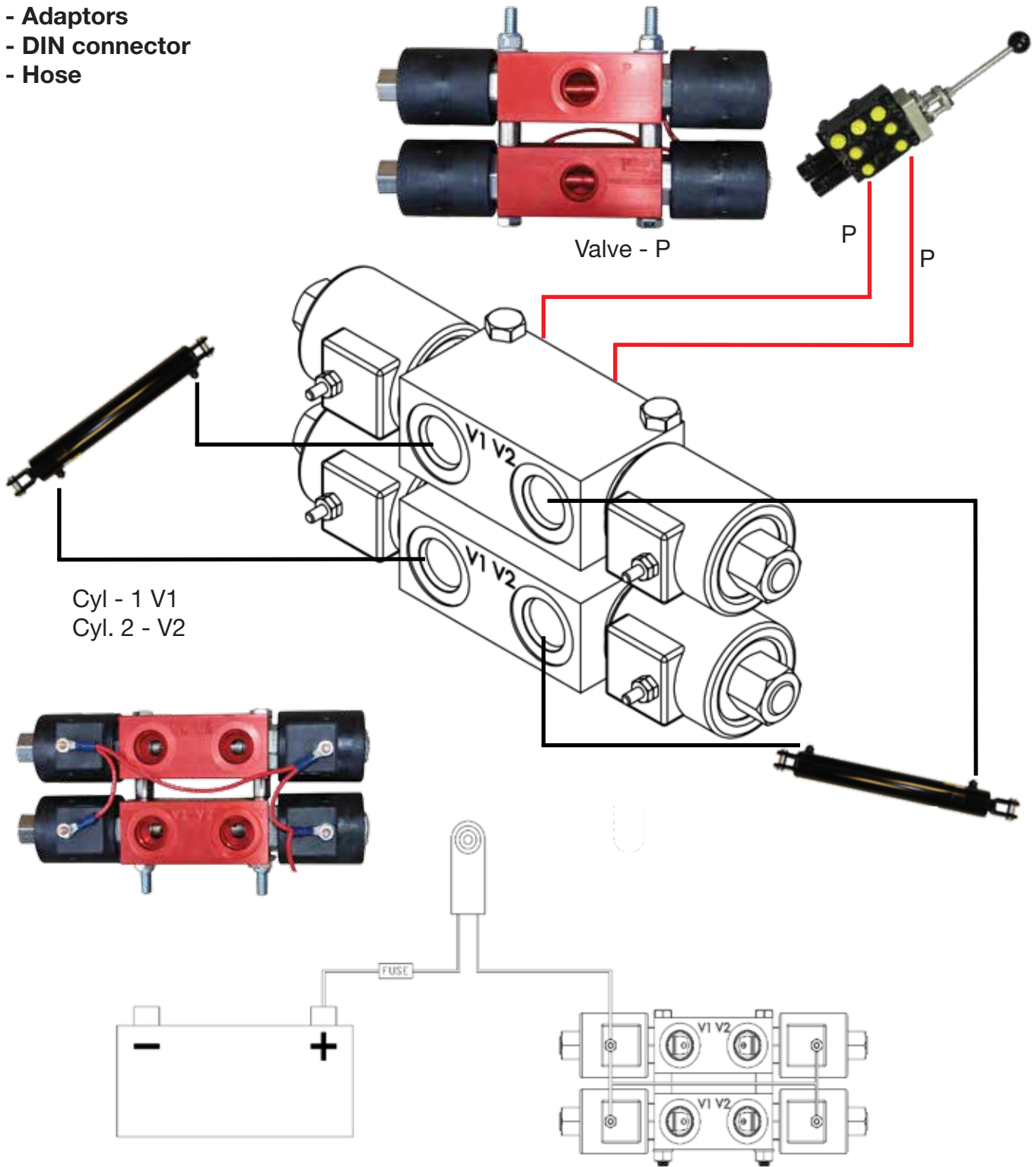


10 GPM
3,000 PSI

Part #
DFP010999

Additional parts needed:

- Adaptors
- DIN connector
- Hose



DAKOTA FLUID POWER *Nine locations to service you in the Dakota's, Nebraska and Wisconsin*

Sioux Falls
800.727.2420

Aberdeen
800.425.9925

Fargo
800.441.9194

Lincoln
866.439.3909

Mandan
701.663.9878

Minot
701.852.0494

Rapid City
866.833.2821

La Crosse
866.227.1348